



Advanced Acrylic

EPOXY-SEAL™

CONCRETE & GARAGE FLOOR PAINT

PRODUCT DATA

SEAL-KRETE® Epoxy-Seal is a ready-to-use, acrylic-epoxy blend formulated to resist hot tyre marks/pickup, chemicals, oil, grease and petrol stains. This epoxy-fortified formula dries to a durable, UV-resistant, satin finish that resists scuffing, peeling, blistering and fading. Epoxy-Seal is easy to maintain, making it ideal for both interior and exterior high-traffic areas including garage floors, driveways, shop floors, basements, pool decks, walkways, patios, porches and more. **Important:** Read all directions thoroughly. Always wear gloves and eye protection.

SURFACE PREP

Note: Proper surface prep is critical to product performance. The surface should be clean, dry, sound and free of dirt, dust, oil, wax and grease. You may need an oil stain remover to lift stubborn oil stains.

BARE CONCRETE: Concrete must have cured for a minimum of 30 days before application. Etch the surface with a concrete etching solution to allow for proper penetration and adhesion. Etching is especially important for smooth-troweled concrete surfaces (like garage and basement floors) and is also recommended for rough-finished surfaces. After etching, rinse the surface thoroughly and let dry. If adhesion is still a concern, the surface can then be coated with a clear acrylic, bonding-primer.

Note: If hydrochloric acid is used, it must be neutralized before proceeding.

PREVIOUSLY SEALED, STAINED OR PAINTED CONCRETE: Remove loose or peeling paint and degloss surface by sanding (150-200 grit paper).* Follow with a general cleaning. Rinse thoroughly and let dry. The surface should then be coated with a clear acrylic, bonding-primer.

APPLICATION

Use only when air and surface temperatures are 12-32°C. If more than one can is used, intermix all product to ensure colour uniformity; stir well. Apply a very thin coat with a roller* or nylon-polyester brush. Epoxy-Seal may be diluted (500ml of water per 3.785L can) to ensure first coat is thin enough. Wait 4-6 hours.** Apply second coat (full strength) in a direction perpendicular to the first.

* Use 6mm nap for smooth-troweled surface, 10mm nap for broom-finished surface, 12mm nap for rough or textured surface.

** Additional dry time is needed in lower temperatures or when relative humidity is more than 50%.

COVERAGE: 7 – 12 m² per litre, depending on surface porosity.

DRY TIME: Dry to the touch in 2 hours (25°C, 50% RH). Dry to light foot traffic in 24 hours, heavy foot traffic in 72 hours. Allow a minimum of 5 days before subjecting to automotive traffic. Premature traffic could cause paint to lift.

CLEAN-UP & STORAGE: Clean tools with soap and water. Contact your household refuse collection service for disposal of empty containers and unused paint. **Important:** Wait 30 days before rinsing or cleaning surface. To avoid premature paint failure, do not use abrasive cleaners or pressure-washer on surface.

LIMITATIONS: Not recommended for wood, metal, glazed surfaces or areas subject to standing water or hydrostatic pressure. Areas receiving heavy tyre traffic may require occasional touch-up.

CAUTION: KEEP OUT OF REACH OF CHILDREN. DO NOT TAKE INTERNALLY.

USE WITH ADEQUATE VENTILATION. To avoid breathing vapors and spray mist, open windows and doors or use other means to ensure fresh air entry during application and drying. If you experience eye watering, headache or dizziness, increase fresh air and use a properly fitted respirator (NIOSH- approved for organic vapour with P Series particulate prefilter). Obtain professional advice before using. A dust mask does not provide protection against vapours. Avoid contact with eyes and skin. Wash thoroughly after handling. Close container after each use.

FIRST AID: If you experience difficulty breathing, leave the area to obtain fresh air. If continued difficulty occurs, get medical attention immediately. In case of eye contact, flush immediately with plenty of water for 15 minutes and get medical attention. For skin contact, wash thoroughly with soap and water. If swallowed, get medical attention immediately.



Jac Jay Ltd • PO Box 12-161 • Penrose • Auckland • email: sales@jacjay.co.nz or call 0800 100 881 • visit our website www.seal-krete.co.nz



**READY-TO-USE • RESISTS OIL, CHEMICALS, HOT TYRE PICKUP
HI-HIDE • INTERIOR / EXTERIOR • SOAP & WATER CLEAN-UP**

TECHNICAL INFORMATION:

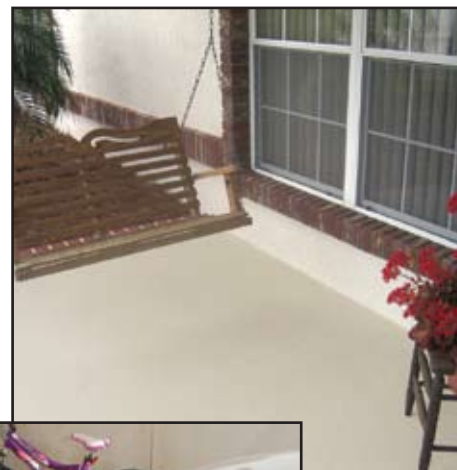
- Finish: Premium Satin
- Colours: Armour Grey, Slate Grey, Sand
- Volume Solids: 38.00 ± 1%
- Weight Solids: 45.00 ± 1%
- VOC (EPA method 24): 98 g/l
- Odour: Very low
- Recommended spread rate (per coat):
 - Wet: 90-115 microns
 - Dry: 40-65 microns
- Coverage: 7-12 m²/L
- Shelf Life: 2 yrs (unopened container stored at 25°C)
- Flash Point: > 93°C closed cup method
- Dry Time (100 microns wet film thickness, 50%RH):

	13°C	25°C	32°C
Dry to touch:	45min	25 min	10 min
Recoat:	6 hrs	4 hrs	2 hrs
Light foot traffic:	36 hrs	24 hrs	12 hrs
Heavy foot traffic:	5 days	72 hrs	36 hrs
Vehicular traffic:	10 days	7 days	5 days

- **ASTM TESTING** (on smooth, bare, etched concrete – 2 coats, 100 microns dry film thickness):
 - ASTM D-4541 (adhesion, 570 psi): 100% concrete failure
 - ASTM D-4060 (abrasion, CS-11 wheel, 1000 cycles): 30 mg loss
 - ASTM D-2794 (impact resistance): 30 inch lbs.
 - ASTM D-522 (flexibility, 180 bend, 1/8" mandrel): Pass
 - ASTM D-4585 (humidity resistance): 500 hr. rating of 10 for blistering
 - ASTM D-3363 (pencil hardness): F (very hard)
 - ASTM D-2486 (scrub resistance): Passes 1000 cycles
 - ASTM C-1028-96 (slip resistance): .60 minimum static coefficient of friction rating
- **Additional Support:** For more information on surface prep or application guidelines, or to obtain a Material Safety Data Sheet, visit our website or call 0800 100 881.

**3 TIMES
THE DURABILITY
OF PORCH & FLOOR
PAINT**

UV-resistant. Very low odour. Hi-hide. Great for concrete garage floors, shop floors, basements, driveways, porches, patios, walkways, pool decks and more!



WARRANTY: Manufacturer/seller makes no warranty of any kind except that this product is free from defect and is of merchantable quality. Buyer remedy for breach of warranty is limited to replacement of product or refund of purchase price.